

ENDEAVOR

2020 CLASS A DIESEL



HOLIDAY  
RAMBLER

[holidayrambler.com](http://holidayrambler.com)





HOLIDAY RAMBLER

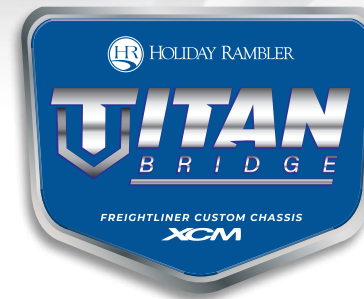
# Choose Adventure

Class A Diesels don't get much more luxurious than the 2020 Endeavor. Long-time Holiday Rambler's will find plenty of all-new features to get them excited to hit the road again. These motorhomes include new exteriors without slide-ram covers, an all-new service bay, side mirror blind spot detection, and your choice of two décors and three cabinetry colors. The Endeavor is also one of the first Diesels in its class to provide RVers with Aqua-Hot® heating and front zone heat.

And trust us, the Endeavor has all the technology you need including, a 100w solar panel and Universal satellite upgrade. Plus, you can always opt for the technology package with its WiFiRanger™ with LTE, weBoost cell booster, MobileEye Collision Mitigation, and 265w solar panel. There's also more standard conveniences onboard, like the 5" color touchscreen Firefly control system, Side Vision Camera System and Safe T View interior cam all come standard.

With all four Endeavor floorplans built on the tough Titan Bridge Platform and featuring Freightliner's fully-integrated steering wheel controls, push button start, auto LED headlights, a smooth convenient ride is in your future.

ENDEAVOR 38W  
MERLOT GRAPHICS



**Holiday Rambler and Freightliner Custom Chassis have teamed up to bring you the ultimate in luxury, power and performance. Introducing the newly re-engineered Titan Bridge foundation.**

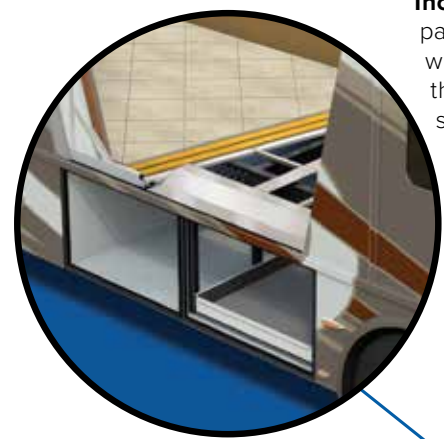
Titan Bridge foundation combines the unrivaled strength and storage capacity of Holiday Rambler's exclusive modular design with the high-performance innovation of a Freightliner chassis—all backed by the nation's largest service support network. The new Titan Bridge brings performance and peace of mind together, perfectly.

*Titan Bridge XCM is the foundation for the Endeavor Holiday Rambler model.*

**ENDEAVOR TITAN BRIDGE**  
360hp



Rated up to 21,000 lbs., V-Ride allows for more luxury amenities, additional cargo capacity and superior roll stability.



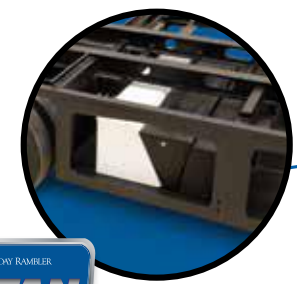
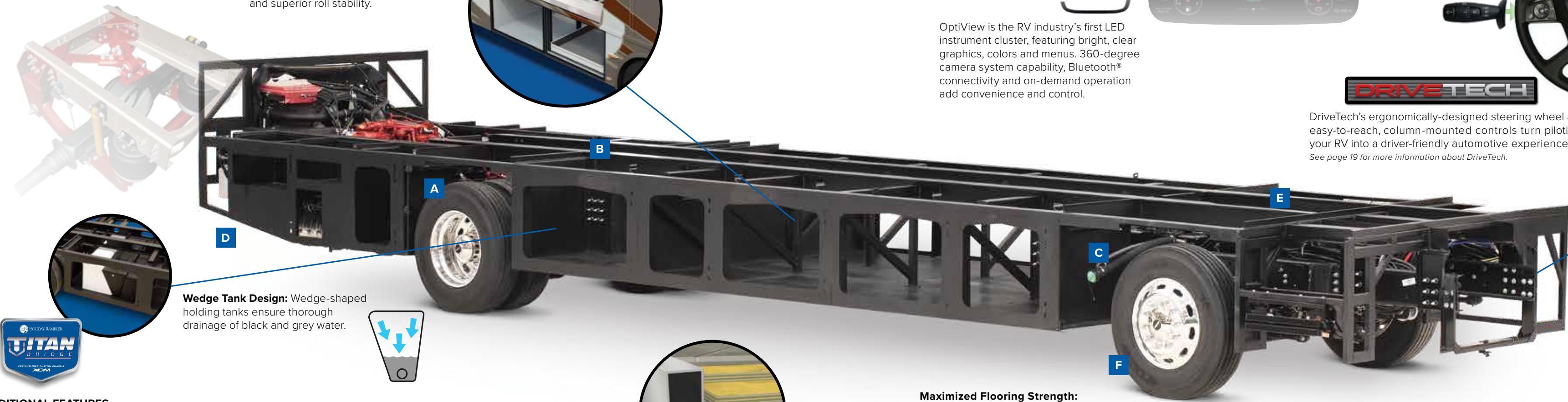
**Increased Storage:** Oversized pass-through storage re-engineered with slide rails integrated into the floor, creating more storage space and easier access.



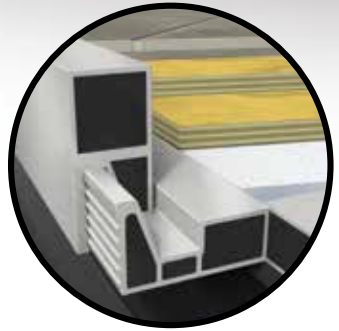
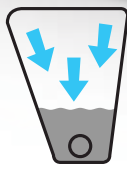
OptiView is the RV industry's first LED instrument cluster, featuring bright, clear graphics, colors and menus. 360-degree camera system capability, Bluetooth® connectivity and on-demand operation add convenience and control.



DriveTech's ergonomically-designed steering wheel and easy-to-reach, column-mounted controls turn piloting your RV into a driver-friendly automotive experience. See page 19 for more information about DriveTech.



**Wedge Tank Design:** Wedge-shaped holding tanks ensure thorough drainage of black and grey water.

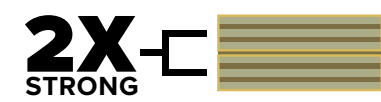


**ADDITIONAL FEATURES**

**A Premium SACHS® Shocks** increase comfort, safety and dependability. **B I-Beam Construction** achieves a torsion rating that is 30% higher than the competition. **C Dual-Side Fuel Fills** provide high-flow access to the 100-gallon fuel tank from either side of the RV. **D Impressive Towing Capacity** with integrated receiver hitch ratings of 10,000 lbs., offering a wide range of towing capabilities.\* **E Central Protective Raceway** houses air, hydraulic and electrical lines while providing easy access. **F Michelin® Tires w/Polished Aluminum Wheels** give you on-the-road performance and let you arrive in style.

**Maximized Flooring Strength:**

Double-thick flooring effectively deadens exterior noise and increases durability.



**Huckbolts®:** Aerospace-grade, vibration-resistant fasteners for unrivaled strength and reliability.



**RV Ownercare:**

Limited one-year/15,000-mile coach warranty and three-year/45,000-mile structural warranty, whichever occurs first, and it is fully transferable for the first 12 months. RV OWNERCARE is one of the RV industry's most comprehensive programs and includes systems, appliances, components and construction, with no deductible and no service charge.

Chassis Warranty provided by Freightliner Custom Chassis Corporation



## ENDEAVOR FLOORPLANS

Endeavor floorplans are thoughtful in every design and detail with residential well-appointed amenities such as Whirlpool side-by-side refrigerator with water/ice in-door dispenser along with a microwave, optional Fischer Paykel dishwasher, a recessed induction cooktop, articulating bed, stylized MCD window shades with a pop of color, and exclusive Apex furniture.

New highlights for 2020, the 38F includes an option for a 60" sofa bed with mattress. The motion power lounge is an option on the 38K, 38N and 38W which is a two seating lounge with electric recline, built-in usb charger, light up cupholder and a handy repositionable armrest desk. Additional storage is available between the seats. The 38W has the option to add a mid-ship 43" LED TV for the ultimate entertaining. The 38N has added tasteful barn stylized doors to the convertible bunk beds to give a home-like feeling.

Endeavor is loaded with tons of standards such as a 48" exterior entertainment center with a 48" LED TV JBL Sound Bar with Bluetooth® for those gatherings under the sleek Girard® awning complete with LED lighting and automatic wind sensor retraction.

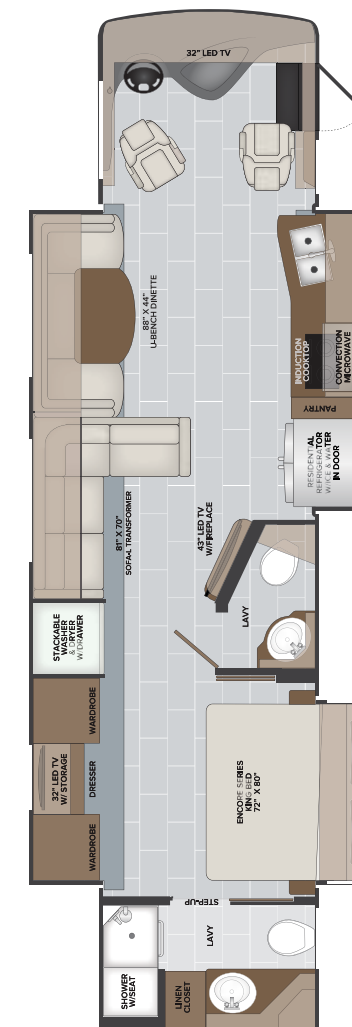
The design of every Endeavor floorplan provides maximum storage space and organization in an elegant cozy atmosphere offering your family the most comfort while on the road.

38F



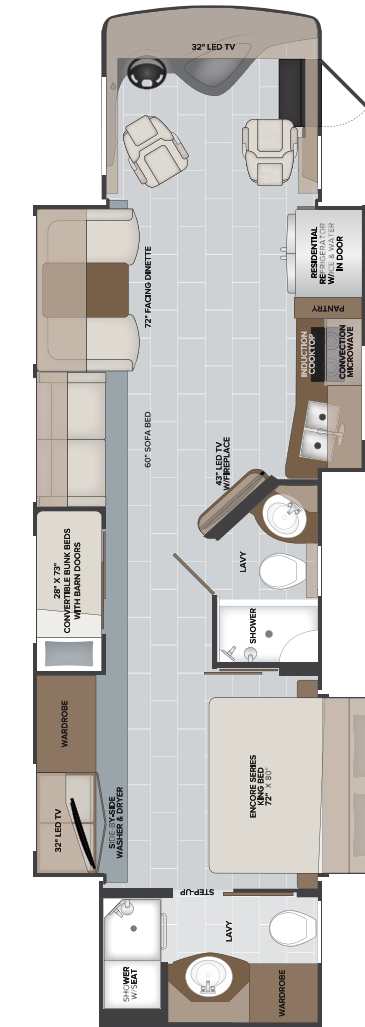
OPTIONS:  
099, 107, 217, 237, 436,  
563, 807, 830

38K



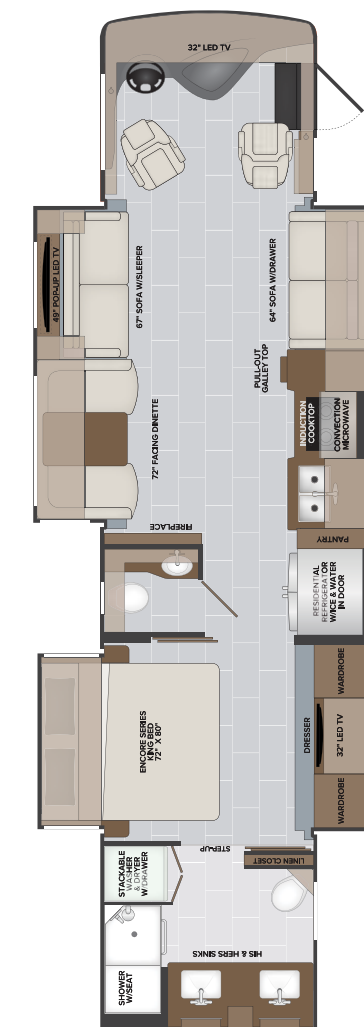
OPTIONS:  
099, 107, 209, 217, 237,  
436, 563, 833

38N

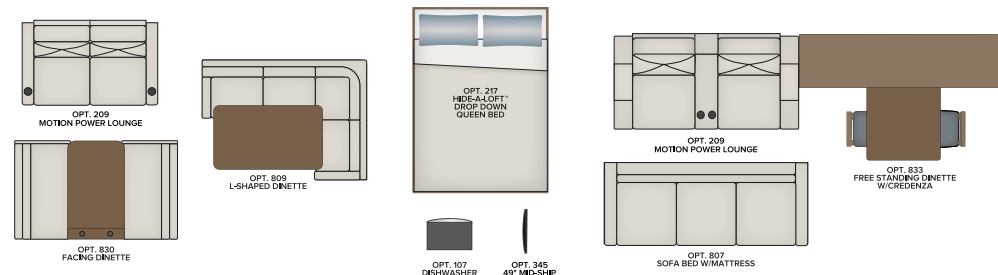


OPTIONS:  
099, 107, 209, 217, 237, 436,  
563, 809, 833

38W



OPTIONS:  
099, 107, 209, 217, 345,  
436, 563, 833



## OPTIONS

- 099 SATELLITE DELETE
- 107 DISHWASHER
- 209 MOTION POWER LOUNGE
- 217 HIDE-A-LOFT™ DROP DOWN QUEEN BED
- 237 THIRD ROOF A/C
- 345 MID-SHIP LED TV
- 436 CSA-FREIGHTLINER® PACKAGE
- 563 TECHNOLOGY PACKAGE
- 807 SOFA BED W/MATRESS
- 809 L-SHAPED DINETTE
- 830 FACING DINETTE
- 833 FREE STANDING DINETTE W/CREDENZA



ENDEAVOR 38W  
TUSCAN DÉCOR WITH  
AMBER CABINETRY



ENDEAVOR 38W  
TUSCAN DÉCOR WITH  
AMBER CABINETRY



Visit our website for more photos  
and to build your 2020 Endeavor  
at [holiday Rambler.com](http://holiday Rambler.com).

ENDEAVOR

2020 CLASS A DIESEL



ENDEAVOR 38W  
TUSCAN DECOR WITH  
AMBER CABINETRY





## DIMENSIONS & CAPACITIES

MODEL	38F	38K	38N	38W
Overall Length (inches)	40' 1"	38' 8"	38' 8"	40' 1"
Overall Height (inches with A/C)	12' 10"	12' 10"	12' 10"	12' 10"
Overall Width (inches maximum)	102"	102"	102"	102"
Interior Height (inches maximum)	84"	84"	84"	84"
Interior Width (inches maximum)	96"	96"	96"	96"
Patio Awning Width (feet & inches)	18'	10' 8"	18'	18'
Interior Storage (cu. ft.)	166	148	152	133
Exterior Storage (cu. ft.)	142	127	127	142
Fresh Water Holding Tank (gal)	105	105	105	105
Grey Water Holding Tank (gal)	75	75	75	75
Black Water Holding Tank (gal)	50	50	50	50
Aqua-Hot® 400	S	S	S	S

## CHASSIS

MODEL	38F	38K	38N	38W
Wheelbase (inches)	263"	252"	252"	263"
Front GAWR (lbs)	12,400	12,400	12,400	12,400
Rear GAWR (lbs) - 360HP	21,000	21,000	21,000	21,000
GCWR (lbs) - 360HP	43,400	43,400	43,400	43,400
Hitch Rating Weight (lbs)	10,000	10,000	10,000	10,000
Tongue Weight (lbs)	1,000	1,000	1,000	1,000
Fuel Capacity (gal)	100	100	100	100

## TITAN BRIDGE® CHASSIS

Standard 360HP  
 Model: Freightliner® XCM Series  
 Engine: Cummins® ISB 6.7L  
 Transmission: Allison® 3,000MH, 6 Speed w/Electronic Shifter  
 Alternator: Delco Remy 160 AMP  
 Torque: 800 lb.-ft. @ 1,800 RPM  
 Horsepower: 360 HP



## EXTERIOR CHOICES



HAZE



MASQUERADE



MERLOT



SHIRAZ

## DÉCOR



TUSCAN

MOONLIT

1-SOFA 2-LIVING ACCENT 3-BEDSPREAD 4-COUNTERTOP 5-FLOORING 6-CARPET

## CABINETRY



AMBER



NUTMEG



WHISPERING WIND

## INTERIOR DESIGNER CHOICES:

Holiday Rambler exclusive interior designer recommends:

Moonlit Décor pairs well with Nutmeg or Whispering Wind cabinetry

Tuscan Décor pairs well with Amber, Nutmeg or Whispering Wind cabinetry

Visit our website for more photos and to build your 2020 Endeavor at [holidayrambler.com](http://holidayrambler.com).

## ENDEAVOR TOP FEATURES



### RENEWABLE SAFE POWER

Each Endeavor comes standard with 100w roof solar panel. You may add a 265w solar panel by upgrading with the Technology Package\*.

### WIFI RANGER™ SKY4 DC

Boost a weak signal to get online in no time with this private secure Wi-Fi booster.

### WIFI RANGER™ SKY4 PROPACK w/LTE (UPGRADE)

Upgrade to this cellular internet modem with GPS and a WeBoost cellular booster. Included in the Technology Package\* upgrade on Endeavor.



### \*TECHNOLOGY PACKAGE INCLUDES (UPGRADE)

- WiFiRanger™Sky4 ProPack w/LTE
- WeBoost Cell Booster
- Mobileye Collision Mitigation
- 265 Watt Solar Panel



### AQUA-HOT® (STANDARD)

Experience even, quiet heating and on-demand hot water with the standard Aqua-Hot 400D system. Endeavor is the first diesel in it's class to offer Aqua-Hot heating.



### FIRST-CLASS AMENITIES (STANDARD)

Relax in style with modern, luxurious furniture from Apex custom furniture designed exclusively for Holiday Rambler. Plus residential appliances by Whirlpool® appliances refrigerator, microwave and Fischer Paykel dishwasher.



### BLIND SPOT DETECTION (STANDARD)

Ensure smart, safe driving with Velvac® blind-spot upgraded mirrors for your Endeavor. A safety feature, where a light will illuminate on the side mirror if an object is in the blind spot ensuring safe travels. Mirrors are power, heated, remote with turn signals and side cameras.

The 2020 Endeavor is equipped with DriveTech which rolls together Freightliner's latest innovations—like the OptiView all-digital LCD dash display, and FCCC's all-new ergonomic steering wheel and column-mounted controls—into one comfortable, easy-to-use driver console.

## FEATURES

### A OPTIVIEW® ALL-DIGITAL INSTRUMENT CLUSTER

Designed in collaboration with Mercedes-Benz®, OptiView features a bright, anti-glare display and an easy-to-read interface with clear fonts, colors and menu structure.

- Bluetooth mobile connectivity provides hands-free operation through easy-to-reach controls. If a warning occurs during a call, the warning takes priority over the contact's profile photo in the top center.
- Tire Pressure Monitoring System shows pressure of each tire and triggers alerts for low pressure, high pressure or leaks—even for tires on a trailer or tow vehicle. (optional)

### B OPTIVIEW INSTRUMENT CONTROLS

Accesses an extensive menu of coach data, including fuel economy, performance settings, vehicle and internal diagnostics, transmission prognostics and system information. Also allows customization of OptiView gauges.

### C LEFT HAND COLUMN CONTROLS

Commands all standard operations for safe driving, including windshield wipers, headlights and turn signals, consistent with an automotive experience.

### D PUSH-TO-START BUTTON & KEY FOB

Push-to-start functionality makes startup a breeze, and our advanced key fob includes two buttons for OEM-programmable actions beyond the standard lock and unlock functions.

### E RIGHT HAND COLUMN CONTROLS

The transmission and engine brake are controlled using less distracting, easy-to-reach column controls versus traditional shifter pads.

- Transmission – Easily transitions between Neutral, Drive and Reverse gears — with integrated automatic or manual gear selection. To manually shift, push down to get into manual mode - then pull up to cycle through each gear. When you reach 5th gear, another shift will return back to Auto Drive.
- Driving Mode - While on the road, you can effortlessly toggle the transmission from performance to economy mode.
- Engine Brake - Higher and lower settings can be selected by moving the paddle up or down.



### PRIORITIZING DRIVER SAFETY

A recent study reported that 80% of collisions and 65% of near collisions involved some form of driver distraction, often from using electronic devices while driving. DriveTech prioritizes driver safety by streamlining and simplifying controls to help drivers focus their full attention on maneuvering and piloting the coach.

### DISCLAIMER

1. GVWR (Gross Vehicle Weight Rating) is the maximum permissible weight of this fully loaded motorhome. The GVWR is equal to or greater than the sum of the (UVW) unloaded vehicle weight plus the (OCCC) occupant cargo-carrying capacity\*.
2. GAWR (Gross Axle Weight Rating) is the maximum permissible loaded weight a specific axle is designed to carry.
3. GCWR (Gross Combined Weight Rating) is the value specified by the motorhome manufacturer as the maximum allowable loaded weight of this motorhome with its towed vehicle. Towing and braking capacities may be different. Refer to Holiday Rambler and chassis manufacturer's manuals for complete information.
4. Length measured from front bumper to rear bumper (excludes accessories).
5. Excludes safety equipment and awnings.
6. Motorhomes feature a body width over 96" which will restrict your access to certain roads. Before purchasing, you should research any state and/or province road laws which may affect your usage.
7. Tank manufacturer's listed water capacity (WC). Actual propane capacity is 80% of water listing as required by the safety code.

\* The chassis manufacturer recommends the installation of a supplemental brake control system to activate the brakes on the vehicle or trailer you are towing. Hitch receiver ratings expressed are maximum for the hitch receiver installed and may require the purchase of additional equipment that is dependent on the weight of the towed load. Consult with hitch receiver manufacturer for further information.

\* UVW and OCCC are found on the label containing the federal certification tag in each RV.

\*\* The Minimum Towable Load of this vehicle is the available weight capacity, up to GCWR, when the coach is fully loaded to maximum GVWR. However, if the coach is loaded to something less than maximum GVWR, that extra available weight capacity can be added to your Towable Load. For example, if your coach is loaded to 1000lbs less than maximum GVWR, your Towable Load increases accordingly. Do not exceed the hitch rating weight, GVWR or GCWR.

\*\* Seatbelts and locations are shown in the brochure for display purposes only. Actual numbers and locations will vary by model.

\*\*\*All 2020 REV Recreation Group motorhomes include a limited one-year/15,000-mile coach warranty and three-year/45,000-mile structural warranty, whichever occurs first, and is fully transferable for the first 12 months.

## OUR VERY OWN HOLIDAY RAMBLER MOTORHOME SERVICE CENTERS

At Holiday Rambler, we strive to deliver peace-of-mind at every turn. Our devotion to customer service starts with our trusted dealer network and spans to our own staff of motorhome service professionals at REV Recreation Group's regional technical centers. The motorhome service centers are strategically located throughout the United States to provide you convenient service wherever the road takes you.

Below, you'll find the closest motorhome service center, as well as a list of the other centers. Please visit [www.holidayrambler.com/motorhome-service-centers](http://www.holidayrambler.com/motorhome-service-centers) to schedule a Service Appointment.



East Coast REV Technical Center  
800-509-3417

West Coast REV Technical Center  
877-466-6226

### RV Ownercare:

Limited one-year/15,000-mile coach warranty and three-year/45,000-mile structural warranty, whichever occurs first, and it is fully transferable for the first 12 months. RV Ownercare is one of the RV industry's most comprehensive programs and includes systems, appliances, components and construction, with no deductible and no service charge.

Chassis Warranty provided by Freightliner® Custom Chassis Corporation

YOUR LOCAL DEALER



Holiday Rambler is part of REV Recreation Group, a division of REV Group, Inc., a family of 29 industry-leading motor vehicle brands. At REV Group, we innovate, design and build products that connect and protect thousands of people every day—our trusted vehicles are engineered with the utmost rigor and precision to deliver the highest levels of performance, reliability, durability and safety.

[holidayrambler.com](http://holidayrambler.com)  
[revgroup.com](http://revgroup.com)

#### CONTACT US

To locate a dealer near you, visit our website at [www.holidayrambler.com](http://www.holidayrambler.com) or call 1-877-252-4666. We can also be contacted at Holiday Rambler Customer Relations, P.O. Box 1007, Decatur, IN 46733.

**IMPORTANT—PLEASE READ:** Product information, photography and illustrations included in this publication were as accurate as possible at the time of printing. For further product information and changes, please visit our website at [www.holidayrambler.com](http://www.holidayrambler.com) or contact your local Holiday Rambler dealer. Prices, materials, design and specifications are subject to change without notice. All weights, fuel, liquid capacities and dimensions are approximate. Holiday Rambler has designed its recreational vehicles to provide a variety of uses for customers. Each vehicle features optimal seating, sleeping, storage and fluid capacities. The user is responsible for selecting the proper combination of loads (i.e., occupants, equipment, fluids, cargo, etc.) to ensure that the vehicle's capacities are not exceeded.